

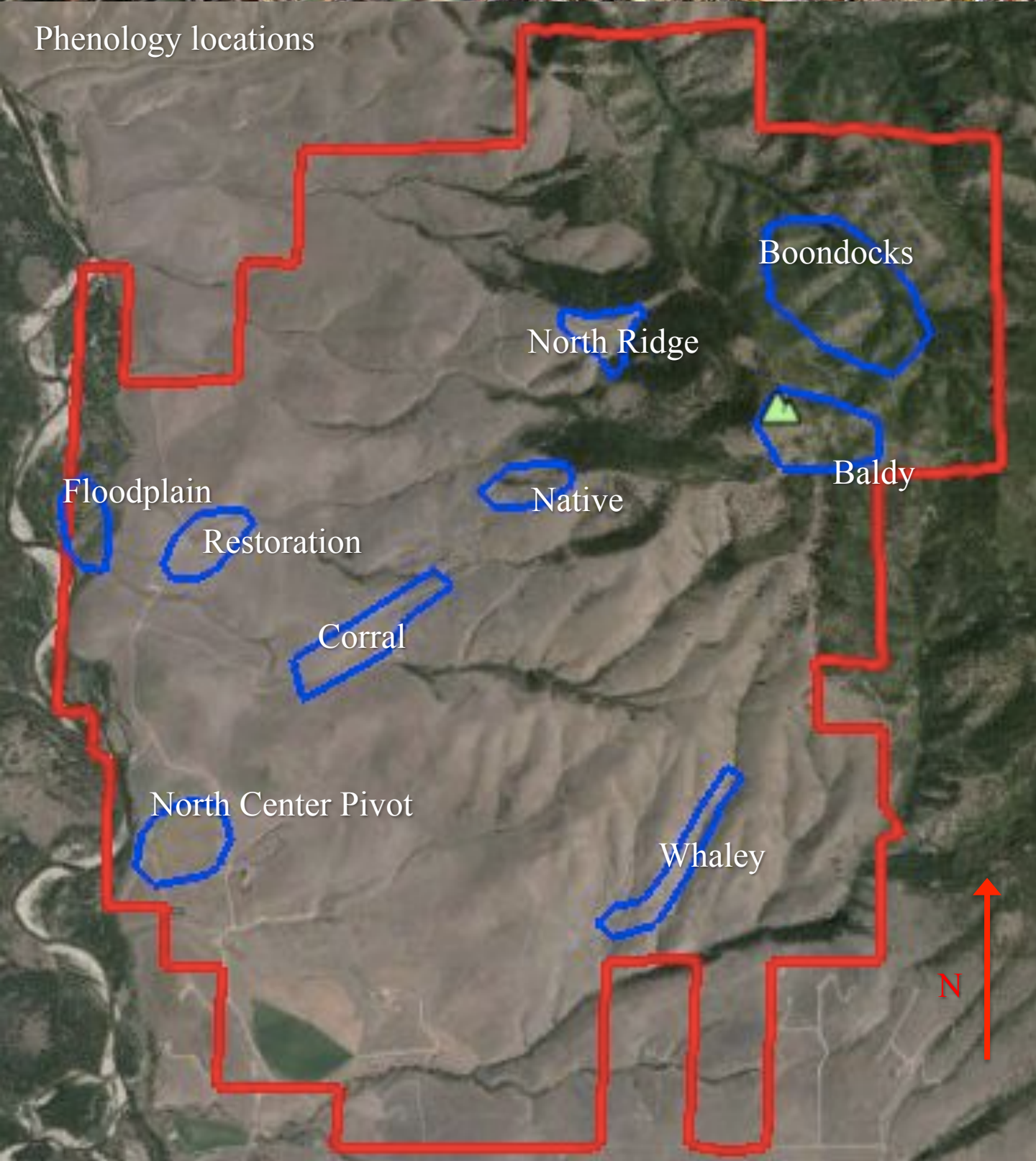
Phenology Field Note  
Seeds and Weeds  
Prairie Wolfe  
September 3, 2014







Phenology locations







The soft cotton ball-like seed heads of false-dandelion contrasted with waving green grasses (*Agoseris glauca*, floodplain).



The plumose tails of virgin's bower seeds adorned shrubs in the floodplain (*Clematis ligusticifolia*).



Yampah blooms made a brief showing in open forested sites. (*Perideridia gairdneri*, native).







Nodding onion seeds ripen from green to black. They prove difficult to collect; a high percentage crumble under light pressure (*Allium cernuum*).





Rabbitbrush (*Chrysothamnus viscidiflorus*) blooms late in the season and provides important resources in an otherwise scarce pollinator landscape. Lady beetles feed on its pollen when other resources are sparse.



Up high, a few false Solomon's-seal individuals managed to produce ripe berries despite the majority of the population succumbing to dry conditions this summer (*Maianthemum racemosum*, Baldy).





Yellow salsify appeared senesced, but put on another flush of flowers with the late summer moisture.





Yellow toadflax (*Linaria vulgaris*) grows in several locations in the center pivot. This species is listed as a Category 1 noxious weed in the state of Montana; I pulled it after snapping a photo.





A flower crab spider waited in ambush for visiting pollinators.



A female black widow watched over her egg sac.





