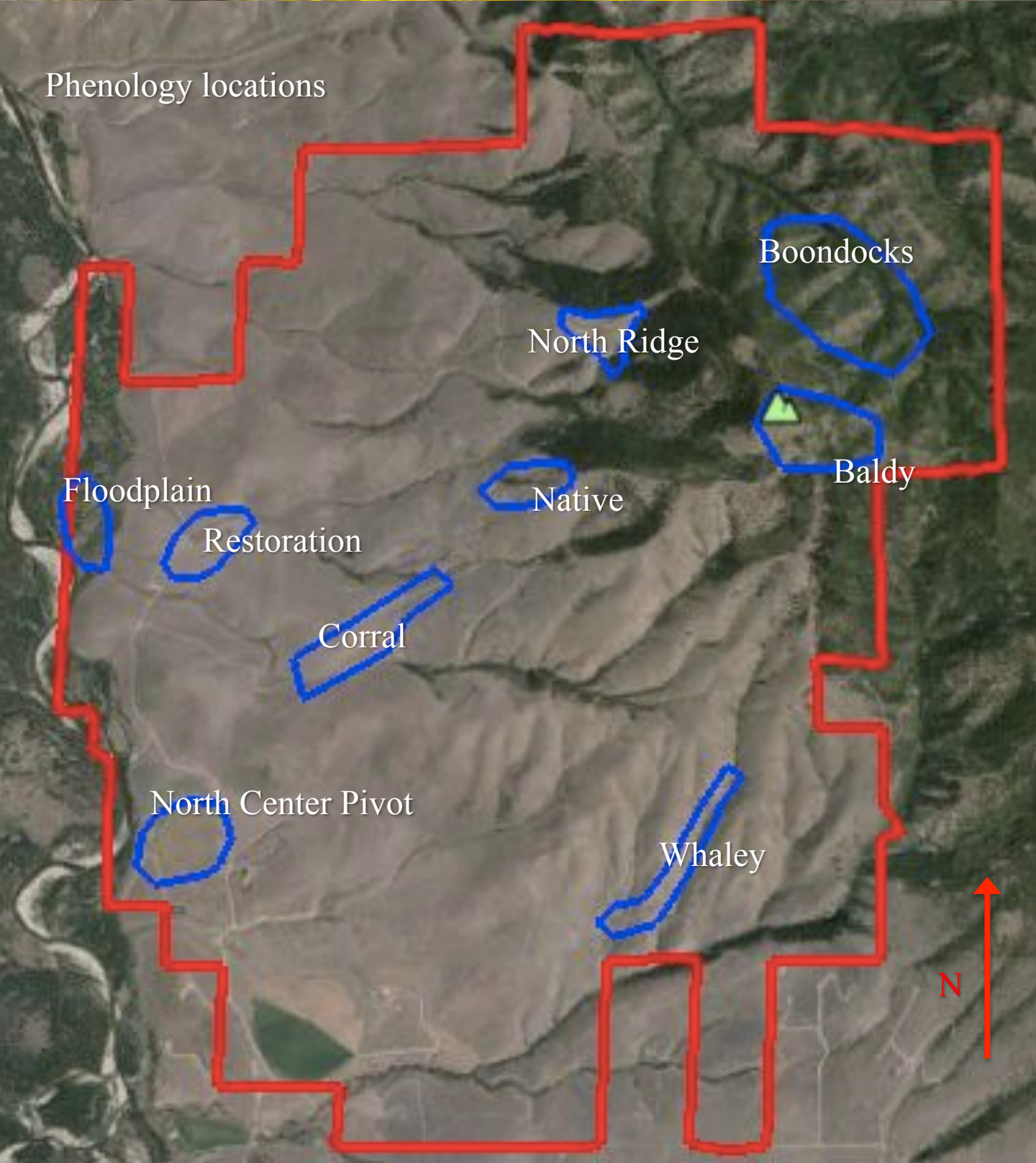


Phenology Field Note
Frosts and Flowers
Prairie Wolfe
October 2, 2014





Big sagebrush displays petite yellow blooms (*Artemisia tridentata*, Corral).



Cutleaf daisy typically blooms in late April. Occasionally, individuals exhibit a secondary flowering period (*Erigeron compositus*, Whaley).



Months of quiet patience result in ripe mock orange capsules (*Philadelphus lewisii*, Whaley).





Above, a flash of colors illuminates forested sites. A more subdued version paints the floodplain in the photo below.



An early frost discolours snowberry foliage (*Symphoricarpos albus*, Floodplain).



In various stages of bloom and fruit, curlycup gumweed lines disturbed roadsides (*Grindelia squarrosa*, Native).



Showy milkweed pods open along a single seam, exposing rows of fish scale seeds (*Asclepias speciosas*, Corral).



Coaxed out of dormancy by a late summer storm, prairie smoke displays old and new leaves (*Geum triflorum*, Corral).



Left to improvise, I use my hat as emergency seed collection bag for bear scat- a gold mine for shrub seeds.



Spotted knapweed continues its relentless flowering campaign (*Centaurea stoebe*, Whaley)



