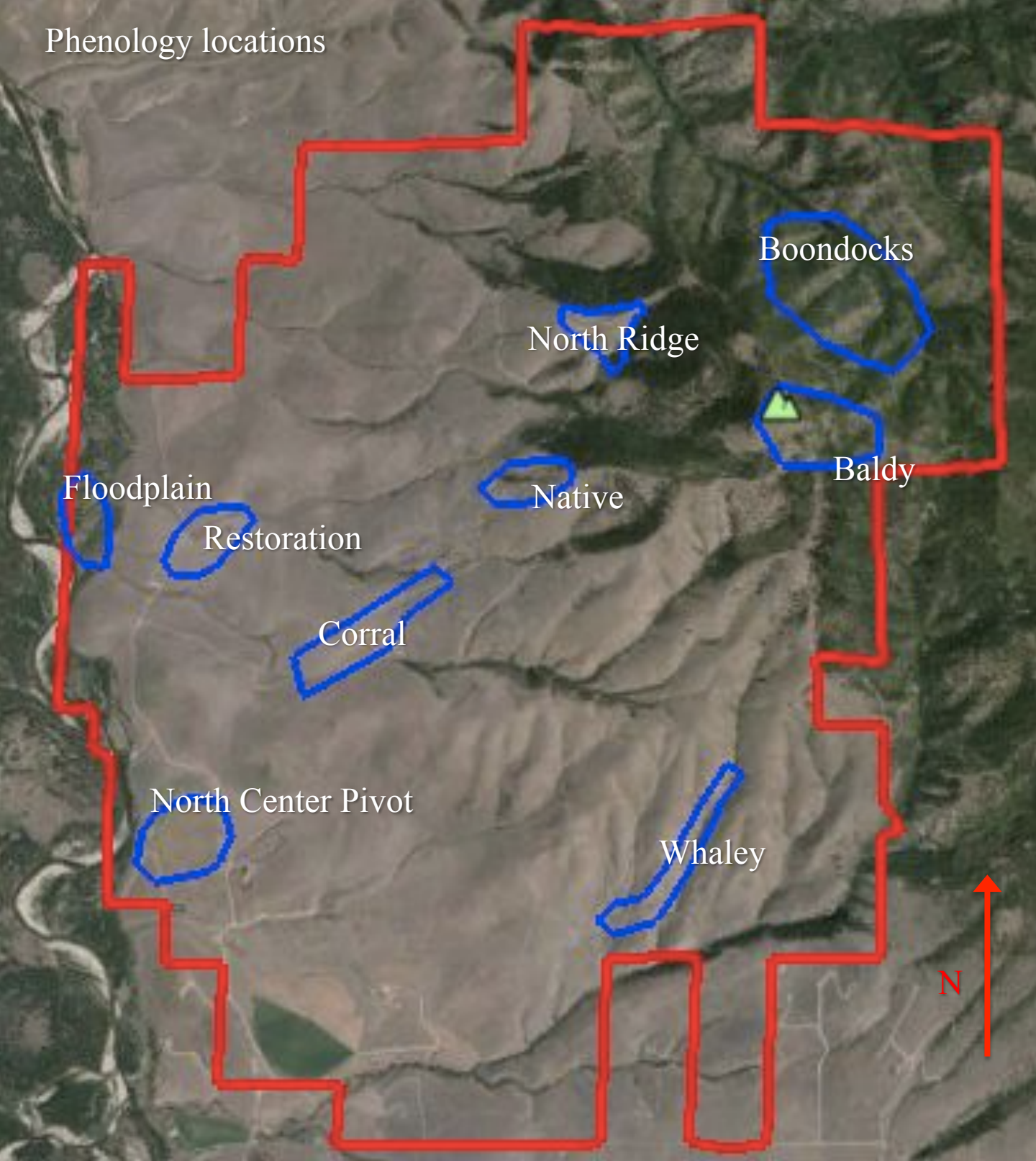


Phenology Field Note
New and Old Plant Growth
Prairie Wolfe
November 3, 2014





Phenology locations



Fallen leaves expose new patterns to dwell on (*Populus tremuloides*, Floodplain).



Leaves of a hawthorn shrub stand out against a blue sky (*Crataegus douglasii*, Whaley).



Few stork's bills emerged this spring, but recent rainfall has produced thousands of new germinates (*Erodium cicutarium*, Center Pivot).



From bare ground erupts sign of life tenacious (*Poa bulbosa*, Restoration.)



An abandoned yellow jacket nest fills the cavity of an old cattle bone.



Ripe capsules remain on a ninebark shrub well after the leaves have fallen (*Physocarpus malvaceus*, Native).



The fog-filled valley brings thoughts of Glacial Lake Missoula.



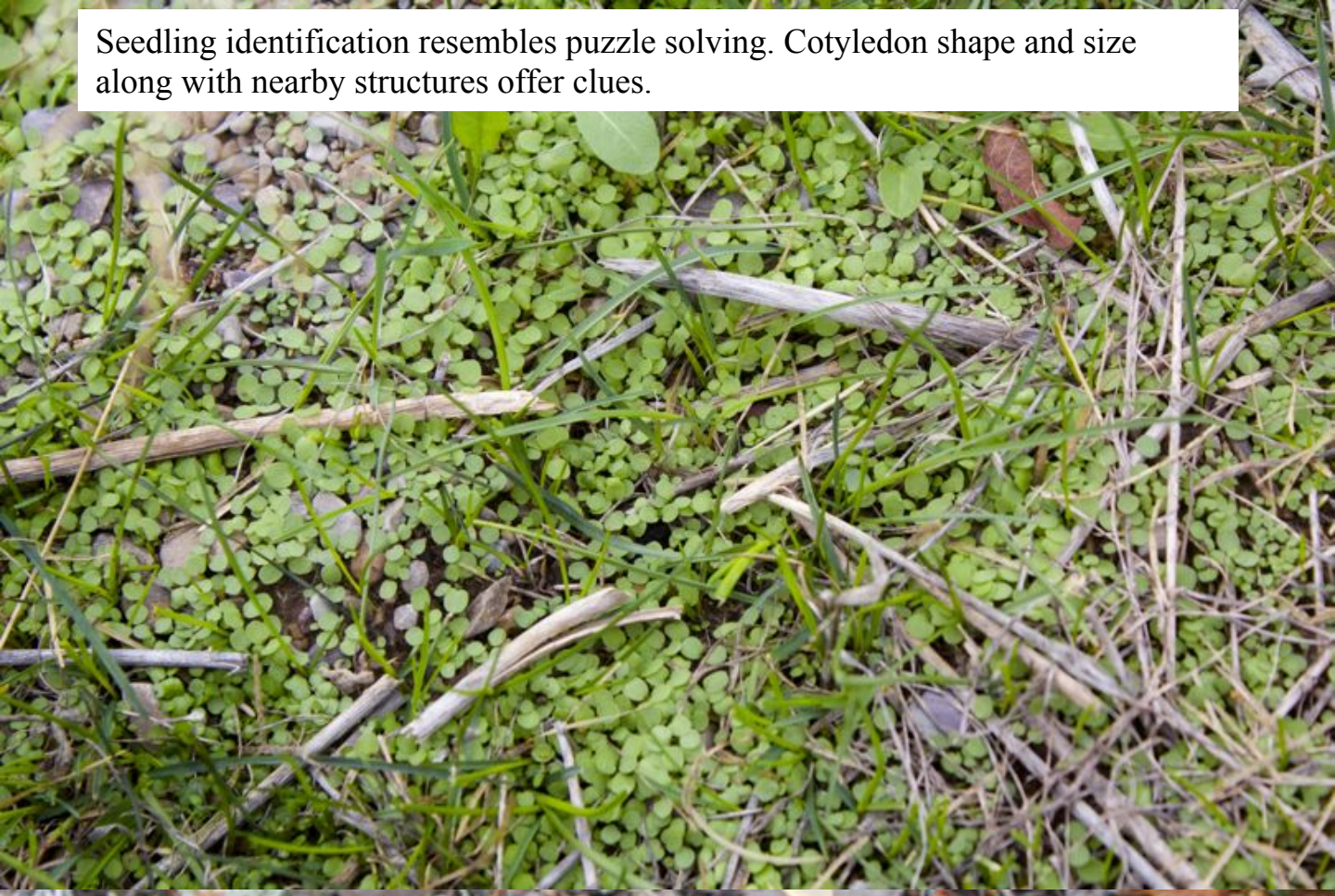
At some sites, cheatgrass experiences a second budding period (*Bromus tectorum*, Whaley).



A second green-up adds color back into the grasslands
(*Pseudoroegneria spicata*, North Ridge) .



Seedling identification resembles puzzle solving. Cotyledon shape and size along with nearby structures offer clues.



Tall cinquefoil continues to unfurl new leaves (*Drymocallis arguta*, Baldy).



