

Field Note
Barbed Wire, Pileated Woodpeckers, Winter Seeds, Road Closures

December 8th, 2014



By Jeff Clarke



A lone wood duck hides among planted bull rushes in the Clubhouse Pond. Mallards, teals, golden eyes, and many other species of ducks use the pond to refuel on their long winter migration.



This pair of pileated woodpeckers reside in the Clubhouse Floodplain. They visit dead cottonwoods and extract frozen insects from within. On cold, quiet winter days, their calls and pecks let everyone know the floodplain still harbors life.

Every winter, most of the river's side channels run dry. This ephemeral channel continues to flow for the first time since the Ranch was purchased.

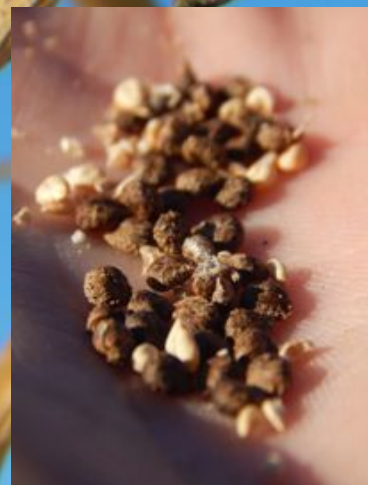


Virgin's bower seeds continue to cling to the vine.



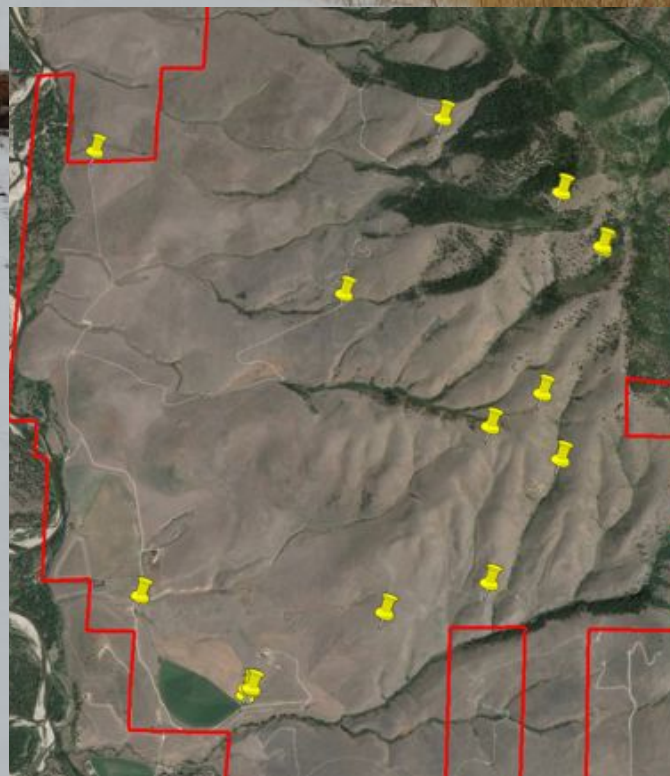


Rocky Mountain bee plants also retain seed.



We bring old barbed wire to Pacific Steel to be recycled.





We closed several roads for the winter to prevent wildlife disturbance during harsh winter months.



For some deer, walking on the ice proves difficult.