

# Bitterroot Wildlife Internship 2015 Field Note

Joshua Lisbon (MPG), Ellen Myers (EPI), & Jonathan Linch (EPI)



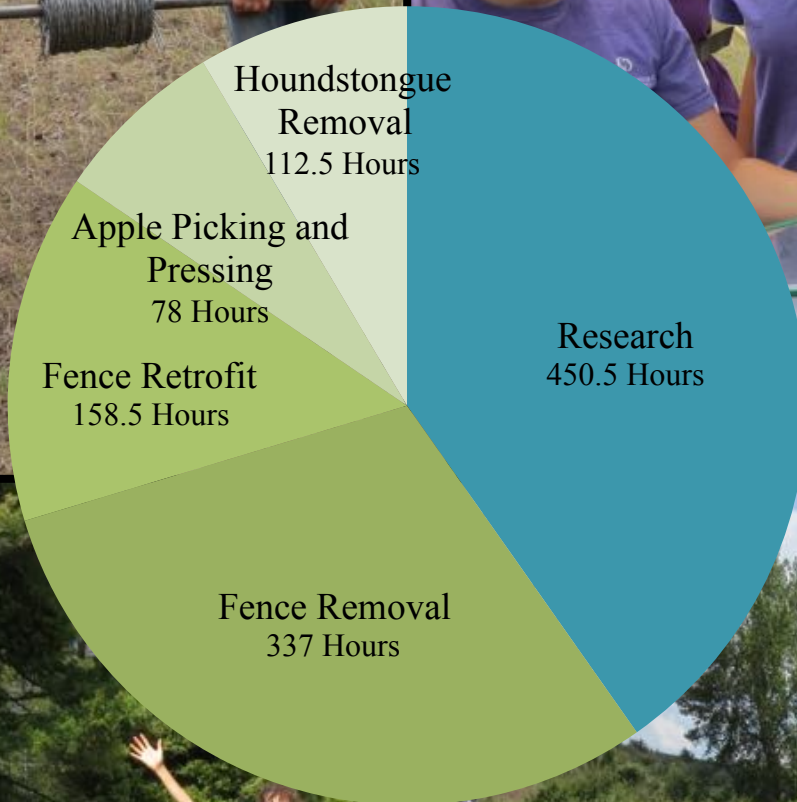
Session 1: June 21<sup>st</sup>-July 16<sup>th</sup>

Session 2: July 26<sup>th</sup>-August 21<sup>st</sup>

In a joint venture between Ecology Project International (EPI) and MPG Ranch 12 interns participated in the Bitterroot Wildlife Internship (BWI) living and learning on the MPG Ranch for one month. Interns engage with the landscape and give back to the land. Each intern worked side by side with an MPG researcher on an ongoing research project, performed field work, and participated in inquiry-based academic instruction. Overall BWI interns contributed 1137 hours to ranch projects.





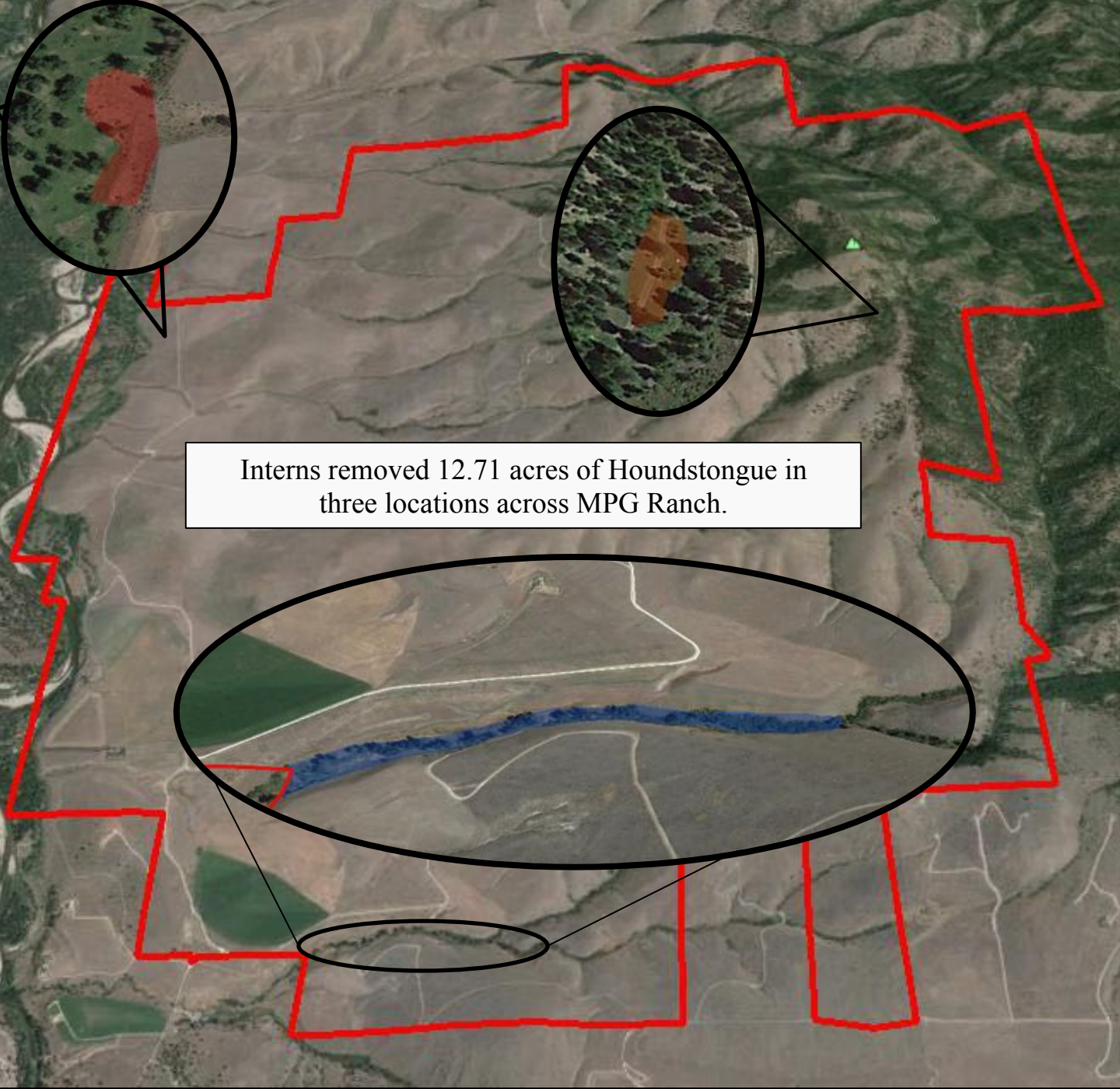




Interns spent 112.5 hours removing houndstongue creating a better habitat for plants and wildlife.







Interns removed 12.71 acres of Houndstongue in three locations across MPG Ranch.







After 337 hours of pulling staples and coiling wire, interns removed 1.5 miles of barbed wire fence.





Interns moved all of the barbed wire and t-posts and took them to the dump for recycling.



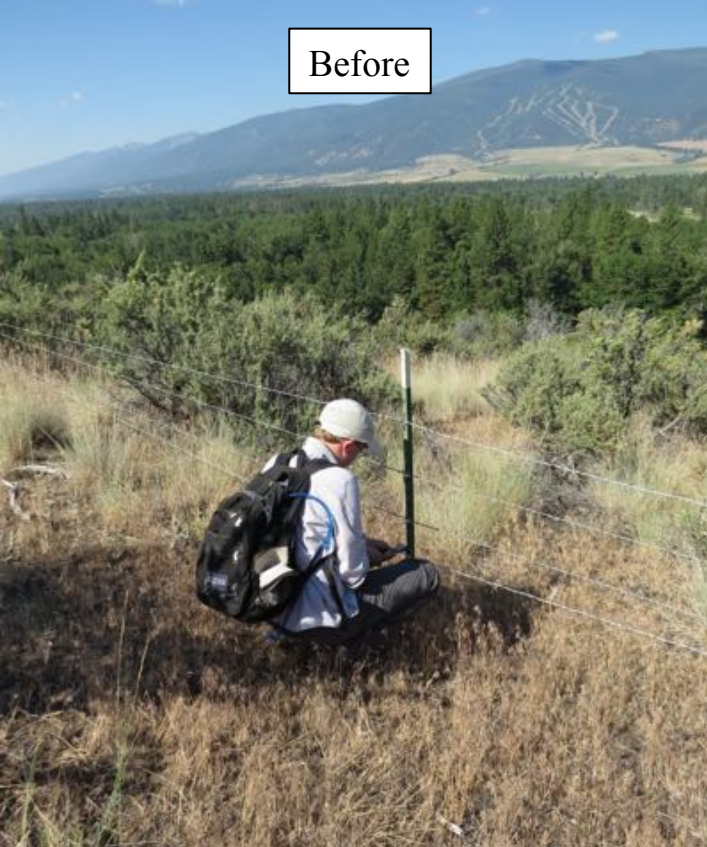


Interns spent 159 hours working with Sapphire Ranch retrofitting 0.7 miles of fence to make it wildlife friendly. Interns adjusted 2 miles of previously retrofitted fence to a more accessible position.





Before



Smooth wire strands make it easier for wildlife to avoid entanglement.

After



Two strands of wire allow wildlife movement above and below the fence line.







Interns spent 78 hours harvesting and pressing apples to make cider. They collected 224 gallons of apples creating 30 gallons of cider.







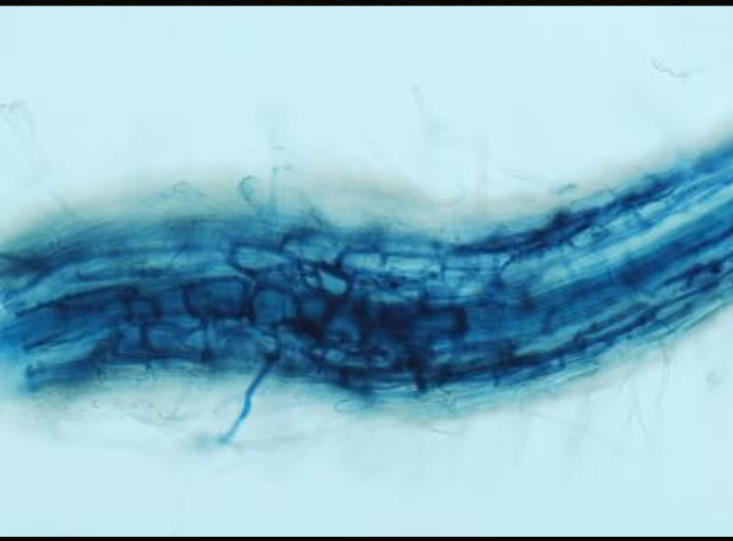
Interns partnered with  
MPG Researchers  
contributing 450 hours to  
the study of invasive and  
native forbs, fungi,  
butterflies, bats,  
pollinators, ungulates,  
native seeds and birds on  
the ranch.







In collaboration with Morgan McLeod one intern studied plant respiration and biomass in native and invasive forbs.



One intern partnered with Ylva Lekberg to study Arbuscular Mycorrhizal Fungi colonization of native and invasive plant roots.





One BWI intern took on a role as a field technician for MariRose Kuhlman for her project on the non-native Starthistle Bee (*Megachile Apicalis*).

Three interns collaborated with Jeff Pippen to study butterfly activity under different time, weather, and temperature conditions over the course of the summer.



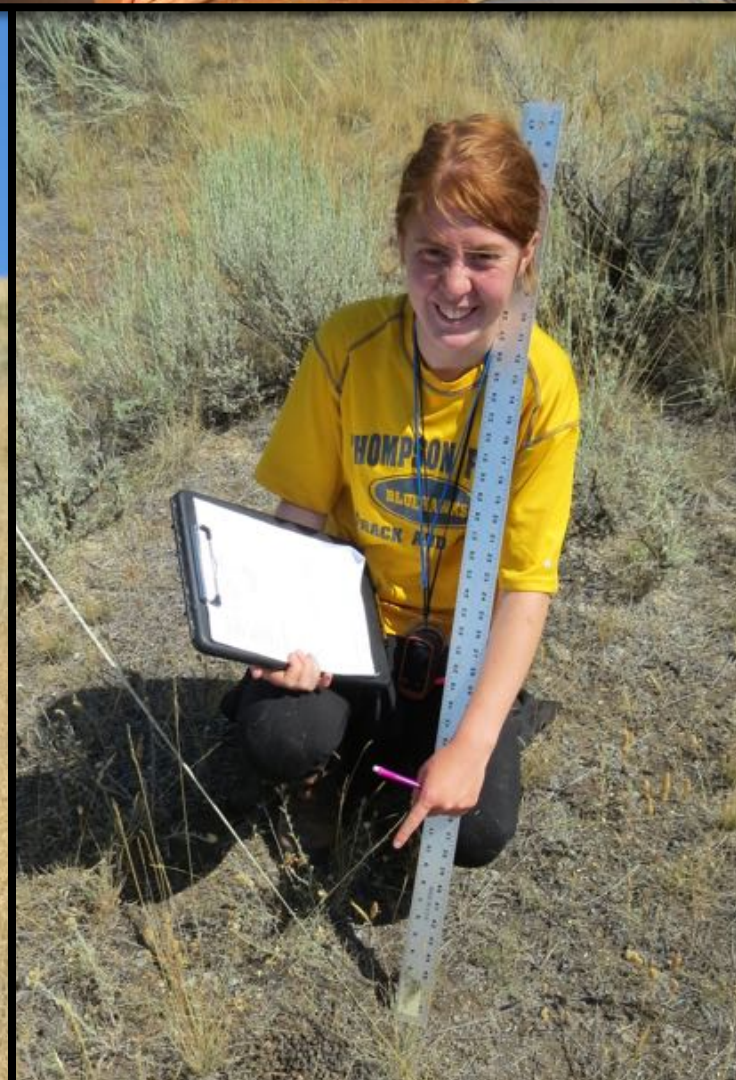




One intern worked with Prairie Wolfe to collect native seeds and study germination rates.



Another intern partnered with Teagan Hayes to research ungulate activity amongst different types of ground cover.







Two interns collaborated with Debbie Leick to study bats for the first time on MPG ranch. Interns determined why the bat boxes were unsuccessful, searched for bat roosts, and used acoustic monitoring to determine bat activity and identify bat species.



Two interns worked with Kate Stone and the bird crew to observe Lewis's Woodpeckers nests and record interactions between the woodpeckers and other species.





Interns participated in 185 hours of curriculum learning about the scientific method, natural history, and the Native American Culture of the Bitterroot Valley.







## 1137 Hours Contributed to Ranch Projects

Houndstongue Removal	113 Hours
Barbed Wire Fence Removal	337 Hours
Fence Retrofit	159 Hours
Apple Picking and Pressing	78 Hours
Research	451 Hours

