

# Spring Bears 2013

Alan Ramsey



Badonkadonk  
(F)



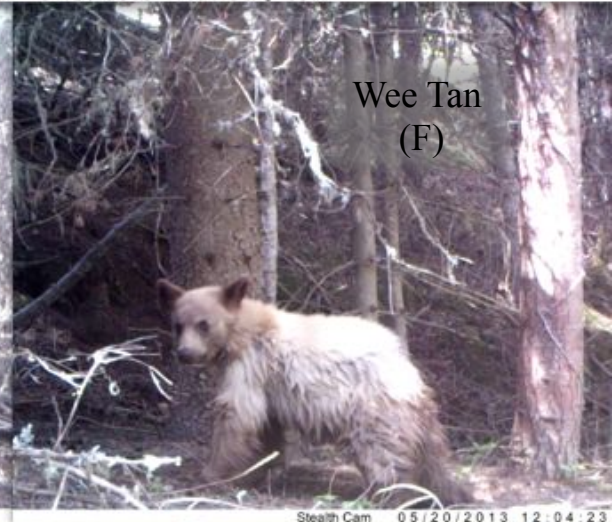
Rattails,  
Mop, and  
Top  
(F,U,U)



Wide Ranging  
Rumple Bottom  
(F)



Doppelganger  
(M)



Wee Tan  
(F)

## Table of Contents

1	Title	11	April 25 <sup>th</sup>	Wide Ranging Rumples Bottom	21	May 29 <sup>th</sup>	Doppelganger
2	Table of Contents	12	April 26 <sup>th</sup>	Rattails, Mop, and Top	22	May 30 <sup>th</sup>	Big Mama, Tab, Coca Cola
3	Bears	13	April 26 <sup>th</sup>	Rattails, Mop, and Top	23	June 9 <sup>th</sup>	White Diamond
4	Introduction, Timeline	14	May 3 <sup>rd</sup>	Wee Tan	24	June 9 <sup>th</sup>	White Diamond, Two Patch
5	March 30 <sup>th</sup> Doppelganger	15	May 7 <sup>th</sup>	Wide Ranging Rumples Bottom	25	June 10 <sup>th</sup>	Big Mama, Tab, Coca Cola
6	April 7 <sup>th</sup> Ear Notch Bear	16	May 9 <sup>th</sup>	Rumples Bottom, Back Float	26	June 12 <sup>th</sup>	Wee Tan
7	April 12 <sup>th</sup> Big Tan	17	May 15 <sup>th</sup>	Black Boondocks Cub	27	June 13 <sup>th</sup>	Badonkadonk
8	April 14 <sup>th</sup> Badonkadonk	18	May 18 <sup>th</sup>	Two Patch	28	Boondocks and Baldy Camera Locations	
9	April 18 <sup>th</sup> Back Float Bear	19	May 19 <sup>th</sup>	Wide Ranging Rumples Bottom	29	Draw Camera Locations	
10	April 21 <sup>st</sup> Back Float Bear	20	May 20 <sup>th</sup>	Wee Tan	30	Ranch Camera Locations	



Back Float Bear, 05/13/13 06:41, North Draw



**Back Float Bear (M):** large, plum colored, floats on back in water, no throat patch

**Badonkadonk (F):** medium, jet black all year, small white throat patch at suprasternal notch, scratches head with left hand in water

**Big Tan (M):** large, light tan in spring, silky coat, Back Float and he are four inches taller on all fours than other males

**Black and Tan Big Mama (F):** medium, black and tan, half shed by mid July, tallest female by three inches

**Black Boondocks Cub (U):** small, 3<sup>rd</sup> year bear, jet black

**Doppelganger (M):** small, no throat patch, grey ring around eyes, small rumple

**Ear Notch Bear (M):** large, plum colored, ear notch on left ear, looks like Back Float Bear

**Fall Black and Tan (U):** small, 3<sup>rd</sup> year bear?, winter tan coat remains in mid August in 2012

**High Patch (M):** small, black and tan, large white throat patch begins just below the suprasternal notch and runs up the throat, half shed by mid July 2012

**Low Patch (M):** small, dark black and tan, shed by early August 2012, large white throat patch begins at the suprasternal notch and runs along the sternum

**Mop and Top (U):** cub size, black and tan 2<sup>nd</sup> year cubs, one has a long white throat patch

**Rattails (F):** medium, the same height as Badonkadonk, retains tan hair on rump into August, has two brown first year cubs

**Tab and Coca Cola (U):** cub size, two 1<sup>st</sup> year brown cubs of Big Mama

**Tawny Rump (M):** medium, tan hair on spine and rump from 7/29- 8/9 2012, arms and shoulders dark

**Two Patch (U):** medium, brown bear with a white throat patch on the neck and another on the throat

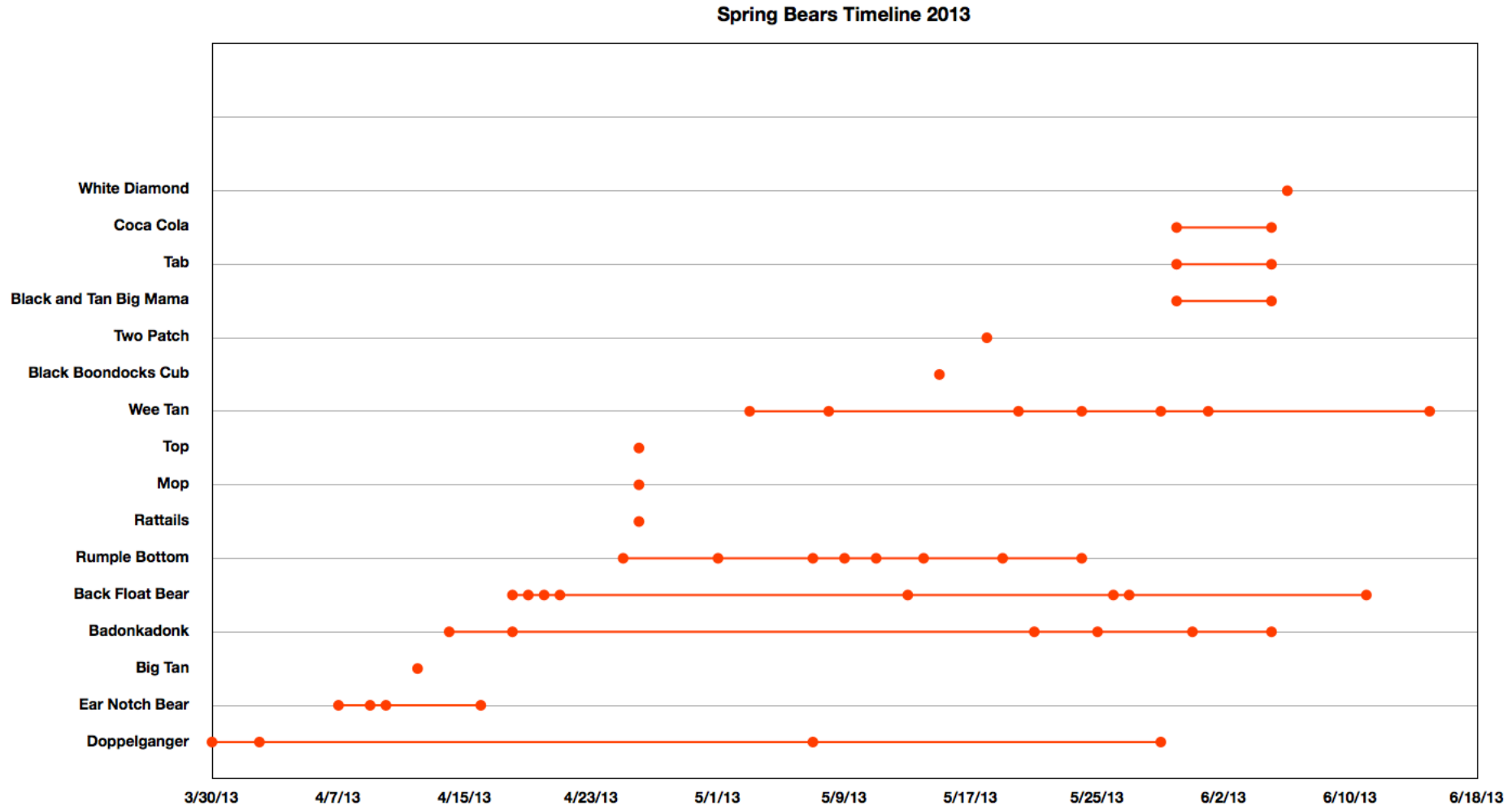
**Wee Tan (U):** small, 3<sup>rd</sup> year bear, shed tan coat and regrew lustrous new tan one in 2012, lighter than Rump Bottom

**White Diamond (M):** medium, brown bear with a white diamond patch on his throat

**White Stripe (F):** small, light in fall, small rumple, long light stripe down sternum

**Wide Ranging Rump Bottom (F):** small, may be a 4<sup>th</sup> year bear, large rear rumple in coat, tan in spring to dark in summer to tan in fall, light patches on throat, sternum, and naval

Introduction- We detected sixteen total bears and five new bears this spring from March 30<sup>th</sup> to June 15<sup>th</sup>. Five bears identified last year were absent this spring. Five bears were common: Back Float Bear (detected on 8 days), Wide Ranging Rumble Bottom (8 days), Wee Tan (7 days), Badonkadonk (6 days), and Doppelganger (4 days). We identified Ear Notch Bear on four days but over a period of less than a week. The common bears went undetected for a week to a month at a time. Their absences indicate the bears have larger home ranges than the size of the property, or they spent time away from cameras on hillsides. Wee Tan may occupy the smallest range of the bears and has made the Boondocks her home. We witnessed her in person five times on Boondocks' hillsides, which is four times more than any other bear. Dates prior to 2013 are highlighted in blue.



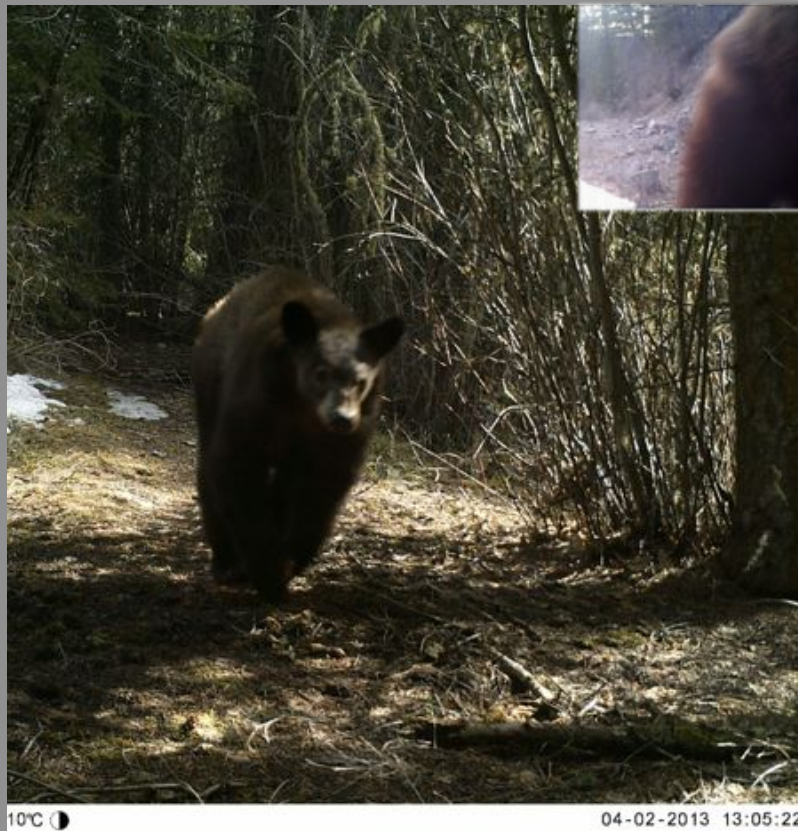
# March 30<sup>th</sup>-April 15<sup>th</sup>

March 30<sup>th</sup>- The first bear of 2013 passed through the north end of Davis Creek at Location 6 on March 30<sup>th</sup> (top middle photo). Doppelganger ambled down the logging trail at Davis Creek 4 three days later on April 2<sup>nd</sup>. No other bear appeared on camera in the Boondocks until Badonkadonk on April 14<sup>th</sup>. The March 30<sup>th</sup> bear has a small rumple. Doppelganger has a small rumple and may be the March 30<sup>th</sup> bear. Doppelganger has big ears relative to his head size. Gray rings around his eyes belie his youth. The images below show Doppelganger's eye rings. He appeared last year for the first time on July 4<sup>th</sup> at Davis Creek 1.

04/02/13 13:05, Davis Creek 4

03/30/13 13:05, Davis Creek 6

05/07/13 17:16, Davis Creek 3



05/07/13 17:17, Davis Creek 3



April 7th- Ear Notch Bear spent a week on the front side of Baldy. He appeared first in Baldy Draw on April 7<sup>th</sup>, stopped in Whaley Draw on April 10<sup>th</sup>, ravished a cow carcass above Woodchuck Draw on April 11<sup>th</sup>, and headed toward the SE exit in Woodchuck Meadow on April 16<sup>th</sup>. We have not recorded him since. Back Float Bear surfaced in Tongue Creek on April 18<sup>th</sup> and may have prompted Ear Notch Bear's departure.

04/10/13 07:34, Whaley Draw



Stealth Cam 04/10/2013 07:34:41 039F

04/07/13 20:44, Baldy Draw Rub Tree



Stealth Cam 04/07/2013 20:44:54 039F



04/11/2013

21:46:25

04/11/13 21:46, Woodchuck Cow Carcass



Stealth Cam 04/16/2013 21:03:12 028F

04/16/13 21:06, Woodchuck Meadow



April 12<sup>th</sup>- We recorded Big Tan once this spring. He followed the trail of a smaller bear on the hillside between Davis Creek 5 and 8 on April 12<sup>th</sup>. He is the lightest-colored large bear. Fur striations on Big Tan's side stop at armpit level but go up to the spine on Big Mama. Big Tan appeared first last year on May 26<sup>th</sup>. He may again venture into Back Float Bear's territory, as he did last year (see bottom left and center images).

Big Tan, 04/12/13, Between Davis Creek 5 and 8



Big Tan, 04/12/13, Between Davis Creek 5 and 8



Big Tan, 06/15/12 19:44,  
Woodchuck Meadow 5



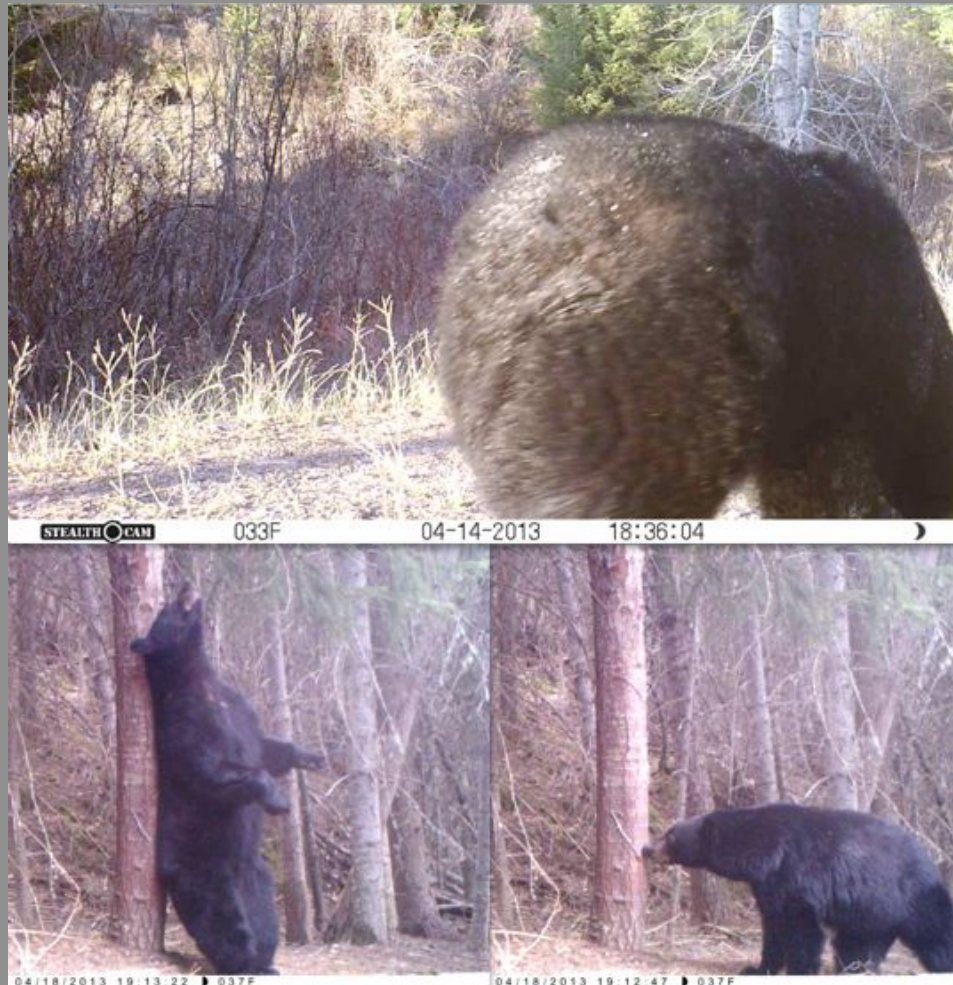
Big Mama, 06/15/12 19:44,  
Woodchuck Meadow 5



Big Mama, 06/05/13 12:53,  
Woodchuck Meadow 5

April 14<sup>th</sup>- Badonkadonk exited through the NE gate on May 14<sup>th</sup> but returned by the 18<sup>th</sup>. She scent marked and sniffed the rub tree at Davis Creek 3 on the 18<sup>th</sup>. She and Black Boondocks Cub are the only two jet black bears. Size comparisons show the bear in the top image is an adult bear, so we infer it is Badonkadonk. We first sighted her last year on May 9<sup>th</sup> in Woodchuck Meadow.

04/14/13 18:36, Davis Creek 8



04/18/13 19:13, Davis Creek 3

04/18/13 19:12, Davis Creek 3



# April 16<sup>th</sup>—April 30<sup>th</sup>

April 18<sup>th</sup>- Back Float Bear first triggered a camera this spring in Tongue Creek on the evening of April 18<sup>th</sup>. Later that night, he visited Sheep Camp and returned to Tongue Creek the next afternoon. The following night he swam in the stock tank in Whaley Draw and rubbed a large ponderosa there in the morning. The bottom middle and right photos compare Back Float Bear (BFB) to Ear Notch Bear. Back Float Bear's grey eyebrows give evidence that he is the older bear. He has no left ear notch in the Tongue Creek or Whaley Draw images.

BFB, 04/18/13 22:47, Tongue Creek



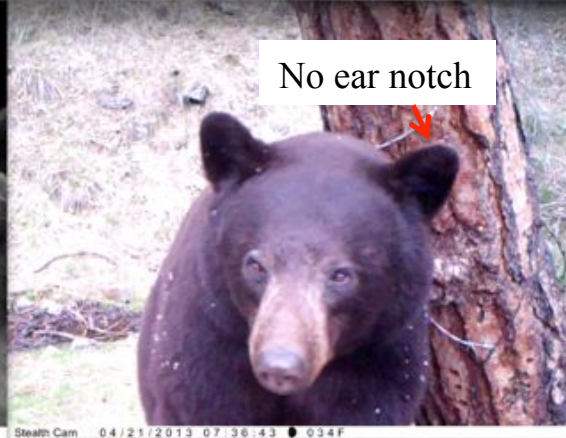
BFB, 04/19/13 01:10, Sheep Camp



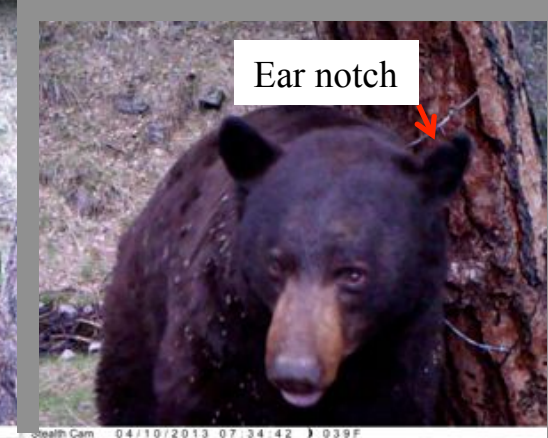
BFB, 04/19/13 14:05, Tongue Creek



BFB, 04/20/13 20:29, Whaley Draw



BFB, 04/21/13 07:36, Whaley Draw



Ear Notch Bear, 04/10/13 07:34, Whaley Draw

April 21<sup>st</sup>- We first recorded Back Float Bear last year on April 21<sup>st</sup> 2012 at Wirespool Junction and this year on April 18<sup>th</sup> at Tongue Creek. The top images compare Back Float Bear on April 21<sup>st</sup> of 2012 and 2013. Camera exposure determines the saturation of the bears coat color. The top left image is overexposed. The dark plum color of the bear is visible and the light grass is bleached out. The top middle image, taken two minutes later, is under exposed. The bear is dark with little color and the green and purple in the grass are visible. The top right image is of medium exposure. The bear is dark with little color and the green and purple in the grass are visible. The bottom images compare Back Float Bear to Ear Notch Bear at the same location. They look the same size.

BFB, 04/21/13 07:36, Whaley Draw

BFB, 04/21/13 07:38, Whaley Draw

BFB, 04/21/12 09:47, Wirespool Junction



BFB, 04/21/13 07:36, Whaley Draw

Ear Notch Bear, 04/10/13 07:34, Whaley Draw



April 25<sup>th</sup>- Wide Ranging Rumble Bottom tramped through the cover of an Aspen Grove in the North Draw on April 25<sup>th</sup> and scent marked a rub tree in Baldy Draw a week later on May 1<sup>st</sup>. We identified her for the first time last year on June 7<sup>th</sup> at Davis Creek 3 (center).

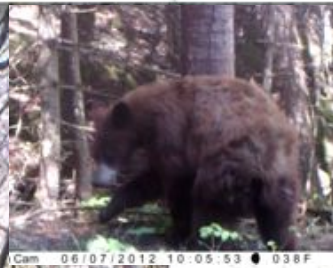
04/25/13 19:17,  
North Draw



06/07/12 10:05,  
Davis Creek 3 (center)



05/01/13 14:43,  
Baldy Draw Rub Tree



05/01/13 14:43, Baldy Draw Rub Tree

05/01/13 14:43, Baldy Draw Rub Tree



April 26<sup>th</sup>- Rattails, Mop, and Top inspected the rub tree at Davis Creek 3 on April 26<sup>th</sup>. We recorded no clear images of Rattails in 2012, but the bottom right image of her from last year shows a small white chest patch like the one in the top right image. Her legs are dark, but she had not yet shed all of the tan hair on her back by 08/05/12. In 2011, a black and tan female bear with a cub passed through the North Draw. A shadowed chest patch is evident in the bottom middle image. The bottom left image shows her black and tan coat. We detected the family twice this spring at Davis Creek 2 and 3 on April 26<sup>th</sup>.

04/26/13 17:50, Davis Creek 3

04/26/13 17:50, Davis Creek 3



05/13/11 18:12, North Draw

05/13/11 18:10, North Draw

08/05/12 13:06, Woodchuck Meadow



April 26<sup>th</sup>- Mop or Top has a large white blaze in the bottom right image on April 26<sup>th</sup>, 2013. Rattails, Mop, and Top ate hawthorn berries during the fall of last year in Woodchuck Meadow. The mother looks dark in the upper left image because she shed most of her tan hair by the fall of last year.

09/05/12 19:02, Woodchuck Meadow



Stealth Cam 09/05/2012 19:02:55 072F

04/26/13 16:18, Davis Creek 2



Stealth Cam 04/26/2013 16:18:53 068F



Stealth Cam 04/26/2013 17:57:13 058F



Stealth Cam 04/26/2013 17:51:01 057F

04/26/13 17:57, Davis Creek 3

04/26/13 17:51, Davis Creek 3



# May 1<sup>st</sup>—May 15<sup>th</sup>

May 3<sup>rd</sup>- Wee Tan ate grass and marked the rub tree along the roadside above Davis Creek on May 3<sup>rd</sup>. She took a look at the camera at Davis Creek 8 five days later (bottom right), then continued down the trail to the NE entrance gate. She has made the boondocks home after she dispersed last year. To our knowledge, she has not ventured on to the front side of Baldy as an adult but passed through the North Draw in 2011 as a cub.

05/03/13 10:45, Davis Creek 7



Stealth Cam 05/03/2013 10:45:27 051F

05/03/13 15:12, Davis Creek 7



Stealth Cam 05/03/2013 15:12:19 065F



Stealth Cam 05/03/2013 15:19:29 071F

05/03/13 15:19, Davis Creek 7



Stealth Cam 05/08/2013 07:48:49 045F

05/08/13 07:48, Baldy Draw

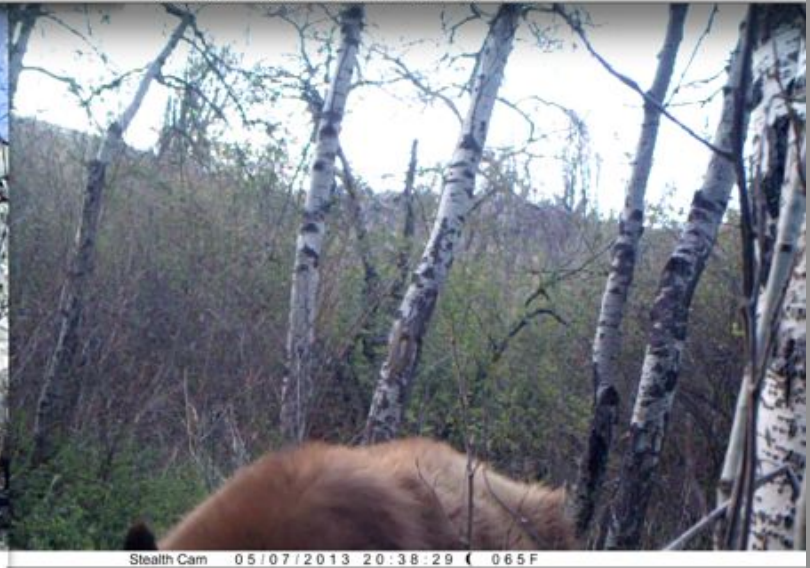


May 7th- Wide Ranging Rumble Bottom climbed a rub tree in Tongue Creek at 17:43 on May 7<sup>th</sup>. In the same hour, Doppelganger marked the rub tree at Davis Creek 3 at 17:17 on May 7<sup>th</sup> (slide 21).

05/07/13 17:43, Tongue Creek



05/07/13 17:43, Tongue Creek



05/07/13 17:44, Tongue Creek

05/07/13, 20:38, Tongue Creek



May 9th- Wide Ranging Rumble Bottom visited Woodchuck Meadow, the Boondocks, and Tongue Creek within the span of a week from May 9<sup>th</sup> to May 14<sup>th</sup>.

5/09/13 12:16, Woodchuck Meadow



5/11/13 15:23, Davis Creek 7



05/14/13 19:22, Tongue Creek



May 13th- Back Float Bear rubbed the North Draw Rub Tree on May 13<sup>th</sup> and passed through Davis Creek 5 two weeks later on May 27<sup>th</sup>.



05/13/13 06:39, North Draw Rub Tree



05/27/13 06:36, Davis Creek 5



# May 15<sup>th</sup>—May 30<sup>th</sup>

May 15<sup>th</sup>- Black Boondocks Cub (BBC) pillaged tree stumps for insects on the hillside above Davis Creek 5 on May 15<sup>th</sup>. All of his triggers last year occurred at Davis Creek 5. Wee Tan ate arrowleaf balsamroot on the east side of Baldy at the same time on the same day (not shown). Black Boondocks Cub was at eye level with the stumps and is the same size as Wee Tan. Badonkadonk (lower right) is pictured for comparison.

BBC, 05/15/13, Above Davis Creek 5



BBC, 05/15/13, Above Davis Creek 5



BBC, 05/15/13, Above Davis Creek 5



Badonkadonk, 06/13/13 15:49, Davis Creek 7

May 18<sup>th</sup>- Two Patch's first and only record occurred at Davis Creek 4 on May 18<sup>th</sup>. This medium-sized bear's height on all fours is 2'6" and on two legs is 5'0". The measurement on two legs is low because the bear stood at the lowest spot beneath the tree.

05/18/13 14:02, Davis Creek 4



05/18/13 14:02, Davis Creek 4

05/18/13 14:02, Davis Creek 4



May 19<sup>th</sup>- Wide Ranging Rumble Bottom rubbed at Davis Creek 3 on May 19<sup>th</sup> and was back in Tongue Creek on May 24<sup>th</sup>. Her belly rounded out and her rumple accentuated it.

05/19/13 09:05, Davis Creek 3



05/24/13 09:23, Tongue Creek



May 20<sup>th</sup>- Wee Tan visited the swimming hole for the first time this year on May 20<sup>th</sup>. She grazed at Davis Creek 2 on May 24<sup>th</sup> and Davis Creek 5 on May 29<sup>th</sup>. The top left picture shows her with Big Mama last year.

06/09/12 14:33, Davis Creek 3



05/20/13 12:04, Davis Creek 3



05/20/13 12:04, Davis Creek 3



05/24/13 12:53, Davis Creek 2



05/29/13 20:28, Davis Creek 5



May 29<sup>th</sup>- After an absence of a month and five days, Doppelganger swam in the Davis Creek 3 water hole and inspected the rub tree on May 7<sup>th</sup>. He is not detected again until he returns to the swimming hole twenty two days later on May 29<sup>th</sup>. He is pictured on the left at the water hole and rub tree last fall.

09/23/12 11:45, Davis Creek 3



05/07/13 17:16, Davis Creek 3



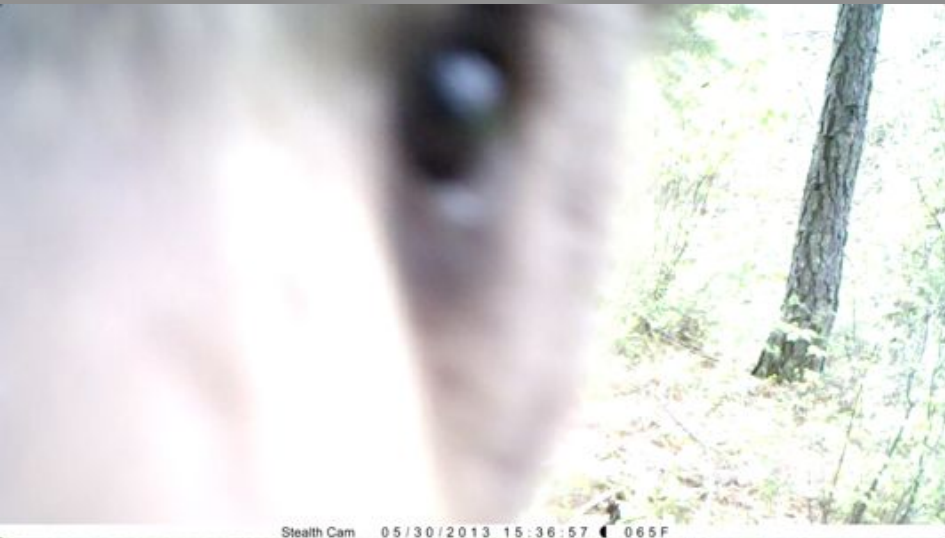
09/05/12 23:47, Davis Creek 3

05/29/13 12:13, Davis Creek 3



May 30<sup>th</sup>- Black and Tan Big Mama, Tab, and Coca Cola headed in two different directions (bottom left) at Davis Creek 5 on the road that leads to the NE gate (Davis Creek 8) (bottom left). The cubs reversed directions before the family pivoted again and entered the small grove where a spring surfaces (bottom middle and right). Another about-face brought them up the draw past the NE gate 43 minutes later (top images). Big Tan courted Big Mama last spring on June 15<sup>th</sup> and 17<sup>th</sup>. Back Float Bear courted her on June 17<sup>th</sup> as well. The color of the cubs suggests Back Float Bear is the father.

05/30/13 15:36, Davis Creek 8



05/30/13 15:34, Davis Creek 5



06/05/13 12:53:20, Davis Creek 5

06/05/13 12:53:39, Davis Creek 5

06/05/13 12:54:14, Davis Creek 5



## June 1<sup>st</sup>—June 15<sup>th</sup>

June 9<sup>th</sup>- White Diamond rubbed at Davis Creek 4 on June 9<sup>th</sup>. A medium-sized male, he reaches 2'5" on all fours and 5'6" on two legs. He showed up at Davis Creek 2 sixteen minutes prior to his visit to the rub tree and may be the bear exiting the property at Davis Creek 8 ten hours later. We did not identify him again this spring.

06/09/13 09:41, Davis Creek 4



06/09/13 09:41, Davis Creek 4



06/09/13 09:25, Davis Creek 2

06/09/13 19:32, Davis Creek 8



June 9<sup>th</sup>- White Diamond and Two Patch are close to the same size and color. White Diamond may have a more ruffled coat than Two Patch.

Two Patch, 05/18/13 14:02, Davis Creek 4



White Diamond, 06/09/13 09:41, Davis Creek 4





June 10<sup>th</sup>- Big Mama and Cubs returned to the spring at Davis Creek 5 (bottom right) on June 10<sup>th</sup>. The location provides habitat for favorite spring bear forage such as cow parsnip and horsetail. Big Mama visited the grove with her two-year old cubs Black Boondocks Cub and Wee Tan on June 6<sup>th</sup> and 9<sup>th</sup>, 2012 and with her one-year-old cubs Tab and Coca Cola on June 5<sup>th</sup> and 10<sup>th</sup>, 2013. We did not record the family on other dates this spring.

06/06/12 15:14, Davis Creek 5



Stealth Cam 06/06/2012 15:14:12 047F

06/09/12 06:55, Davis Creek 5



Stealth Cam 06/09/2012 06:55:19 034F



Stealth Cam 06/05/2013 12:56:40 070F



Stealth Cam 06/10/2013 17:42:31 086F

06/05/13 12:56, Davis Creek 5

06/10/13 17:42, Davis Creek 5



June 12th- Wee Tan attacked the Davis Creek swimming hole on June 12<sup>th</sup>. She may have pounced on one of the small trout that live in the pool, but she came up empty. She rooted through stumps for insects on top of Spike Camp Ridge three days later. (last image).

06/12/13 12:30, Davis Creek 3



06/12/13 12:30, Davis Creek 3



06/12/13 12:30, Davis Creek 3



06/12/13 12:30, Davis Creek 3



06/12/13 12:30, Davis Creek 3



06/15/13 15:30, Spike Camp Ridge





June 13<sup>th</sup>- Itchy Badonkadonk rubbed at Davis Creek 7 on June 13<sup>th</sup>. She swam and scratched with her left hand once this spring in the water hole at Davis Creek 3 on May 21<sup>st</sup>.

06/13/13 15:49, Davis Creek 7

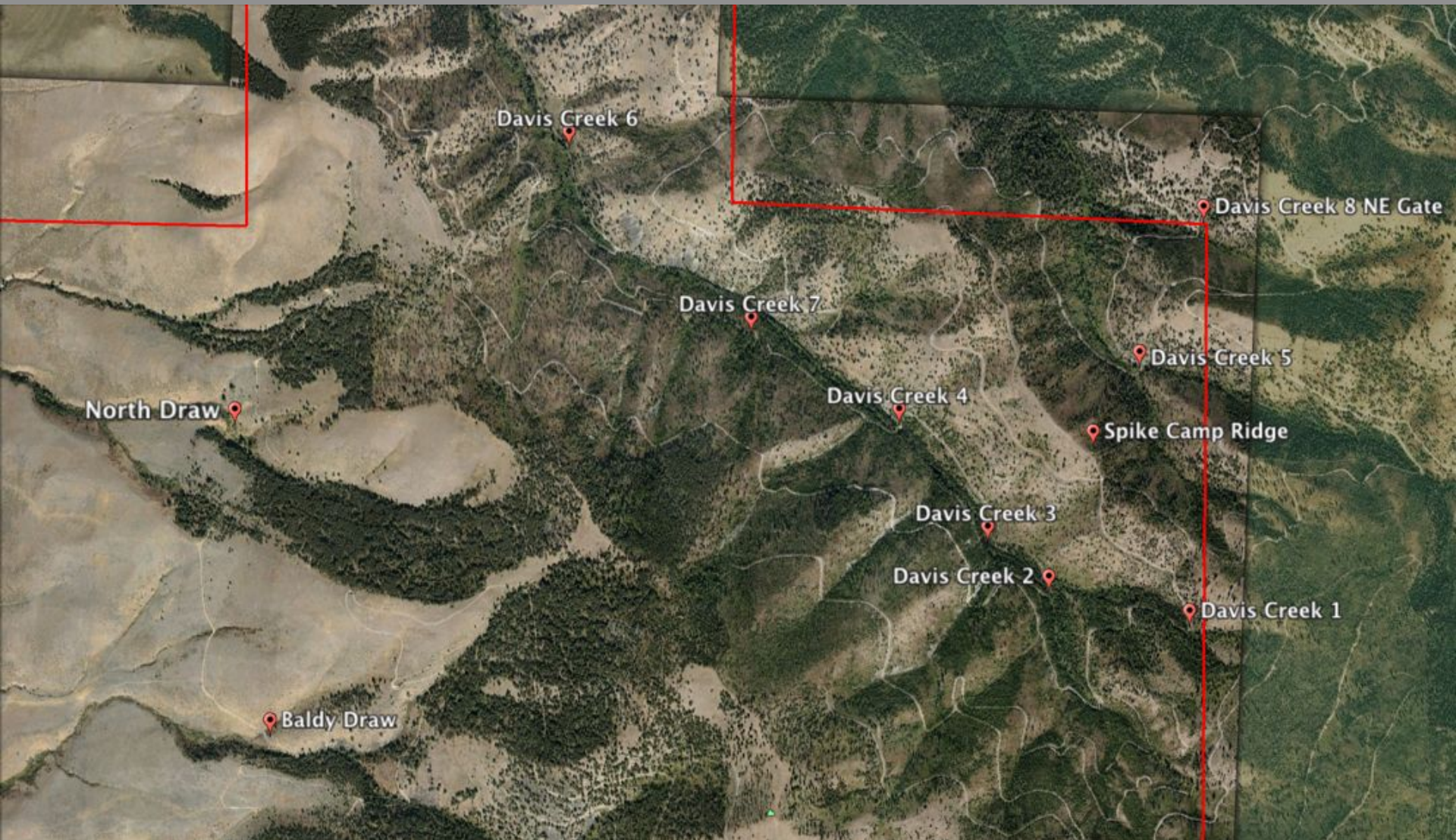


06/14/12 17:39, Davis Creek 3

05/21/13 21:25, Davis Creek 3



## Boondocks and Baldy Camera Locations









# Ranch Camera Locations

