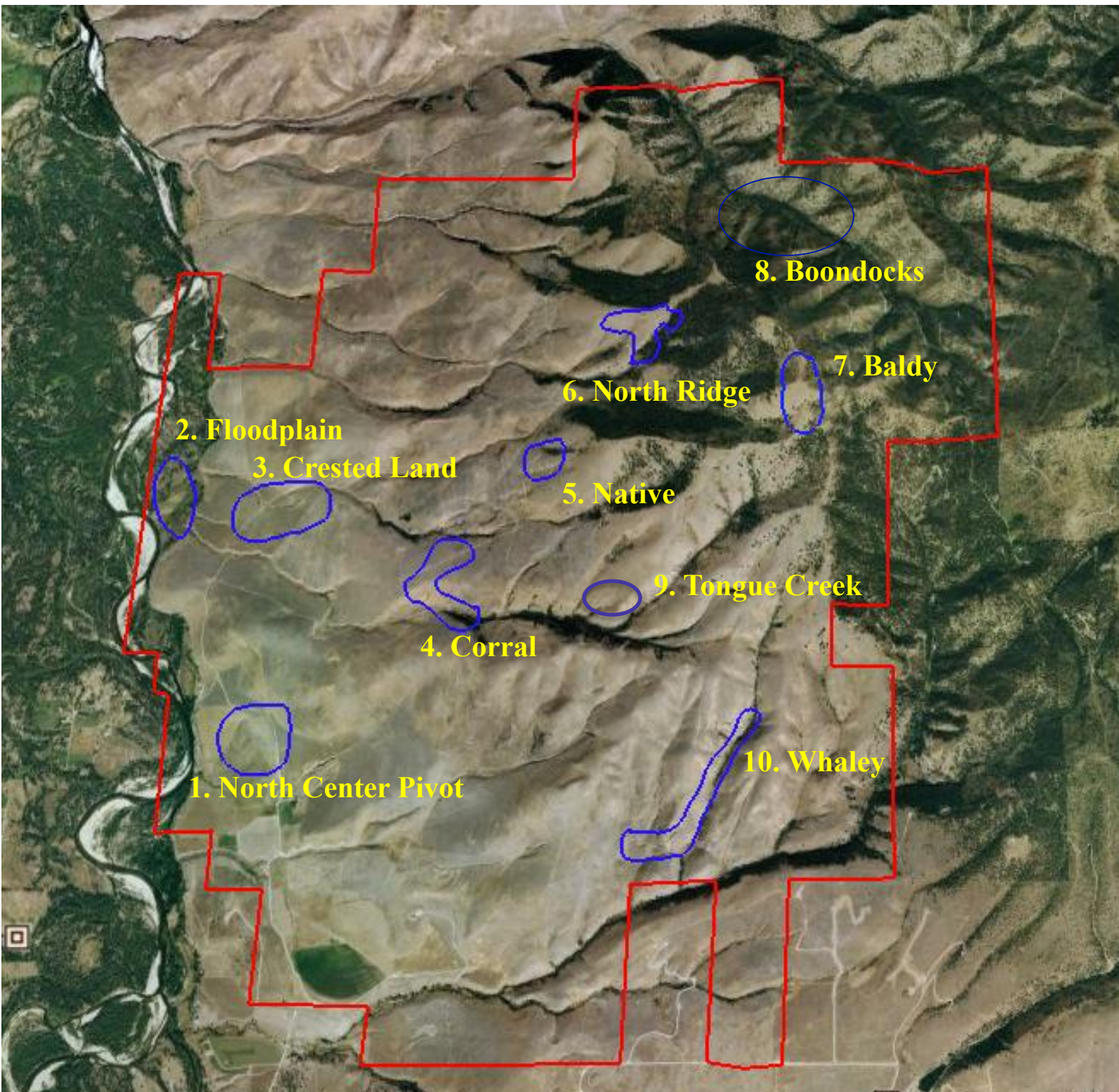


Plant Field Note
MPG Operations
Rebecca Durham
July 2013





Moth mullein, a non-native species, blooms with pastel elegance (*Verbascum blattaria*, Corral).



Luscious serviceberries ripen in woody draws. The flesh of the fruit tastes mildly sweet, but the seeds release a delicious vanilla flavor (*Amelanchier alnifolia*, Whaley).



Blazing star blooms like a firecracker (*Mentzelia laevicaulis*, Corral).



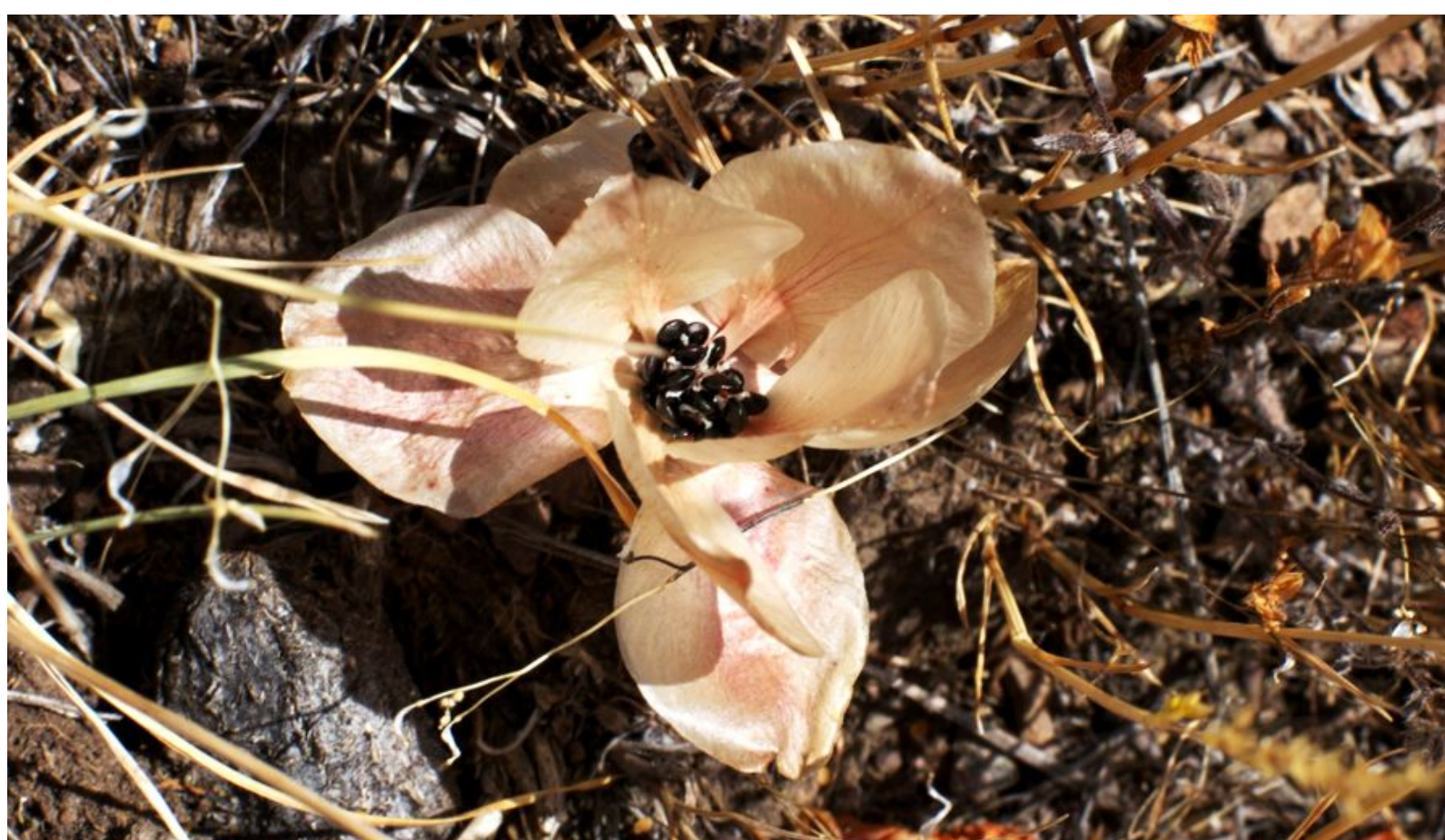
A spider's abdominal cardiac mark creates a focal point with a withered balsamorhiza flower (*Balsamorhiza sagittata*, North Ridge).



The striking contrast of pink horsemint with grey prairie sage catches my eye (*Agastache urticifolia*, left, *Artemisia ludoviciana*, right, Baldy).



A vesper sparrow nest beneath a yarrow plant reveals tiny mottled eggs (*Achillea millefolium*, North Center Pivot).



Dried salmon petals cup tiny black seeds (*Lewisia rediviva*, Native).



Blister beetles feed, mate, and fight on silky lupine (*Lupinus sericeus*, North Ridge).



Noxious hawkweeds plague much of North America. This Scouler's hawkweed is native to Montana (*Hieracium scouleri*, Boondocks).



Deptford pink, a non-native member of the Caryophyllaceae family, appears in low density throughout western Montana (*Dianthus armeria*, Native).



A juba skipper perches on a fading blossom of horse mint (*Hesperia juba* on *Agastache urticifolia*, Whaley).